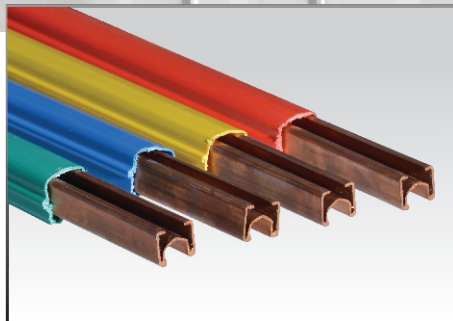
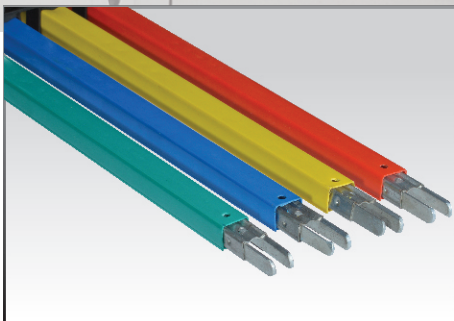
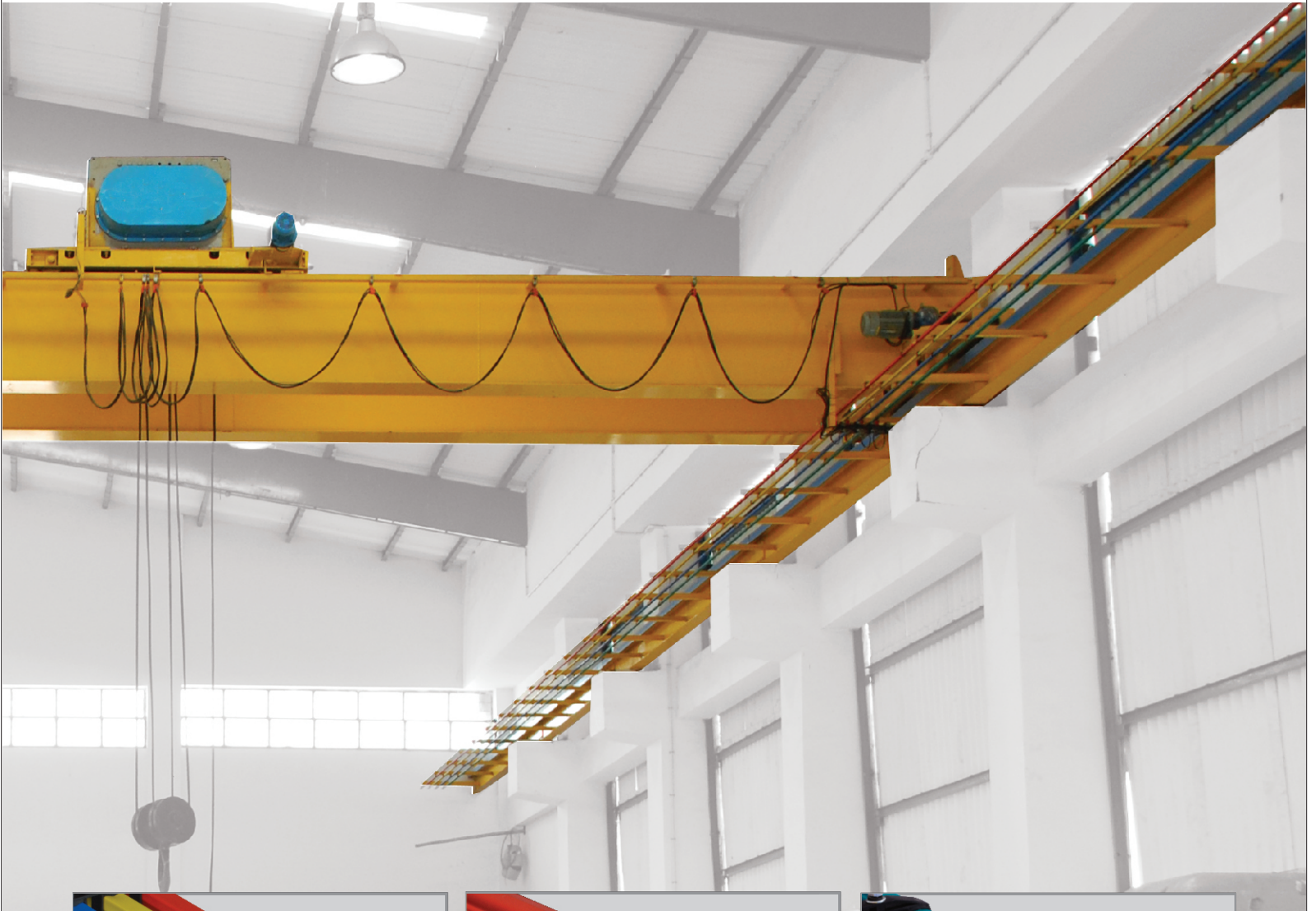




SafePower®
Shrouded DSL BUS BAR & Festoon System

Ultimate Solution For Crane Electrification System



Ganesh
INDUSTRIES



AN ISO 9001 : 2008 COMPANY

✍ **GANESH INDUSTRIES** is a Leading Manufacturer and Exporter of “**Safe Power**” Brand Shrouded DSL Conductor Bar System. Our company is a professional manufacturer and exporter that is concerned with the design, development and production of Insulated conductor bars and Cable Festooning System. The products are used in the power supply system of mobile devices in various fields such as Steel Plant, Cement Plant, Fertilizers, Pharmaceuticals, Heavy Fabrication Industries, Shipyards, Rolling mills, Power Plant, Foundries, and Automobile Sector.

Runway conductors for overhead cranes, gantry cranes, shipyard and port cranes, automated material handling systems, elevators, people mover systems etc. All of our products comply with good quality standards and are greatly appreciated in a variety of different markets throughout the world.

Conductor bar is a safe, economical and low maintenance way to solve mobile electrification requirement. The conductor bar system is having some special features like compactness, less occupation of space and very easy to install. Over all it is very economical. We are reputed firm that specializes in developing and supplying Shrouded Bus bars in Copper, GI and Aluminum metal.

Our Product Range

Shrouded Bus Bars

- | | |
|---------------------------------------|-----------------------|
| ● GI Conductor Bar (Pin Joint) | 60 amps to 125 Amps. |
| ● GI Conductor Bar (Bolted Joint) | 80 amps to 125 Amps. |
| ● Copper Conductor Bar (Pin Joint) | 160 amps to 315 Amps. |
| ● Copper Conductor Bar (Bolted Joint) | 160 amps to 400 Amps. |
| ● Aluminium With SS Conductor Bar | 200 to 315 Amps. |

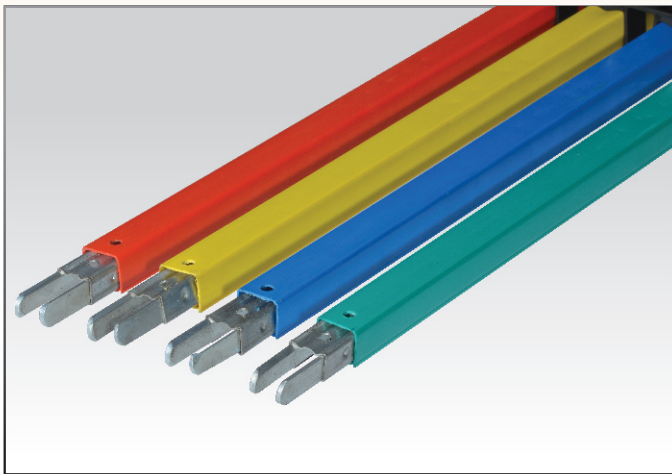


“M” Pin Type DSL Busbar System

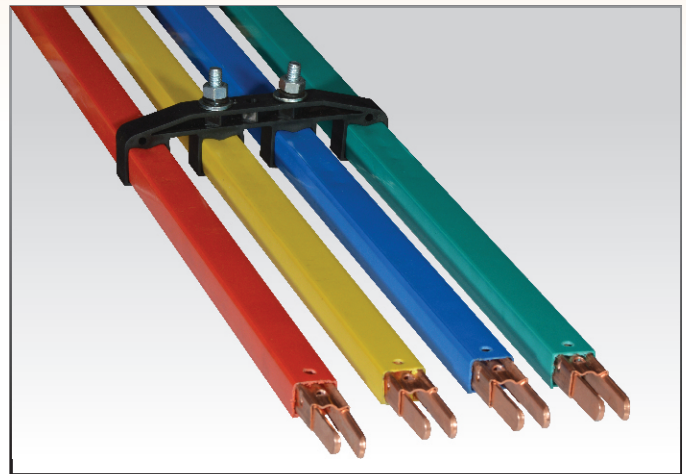
These conductor are compact, insulated, easy to installation, in horizontal or vertical configuration.They require much less space compared to conventional bar conductor systems

The conductor bars are 4 meter long to be supported at every 1 meter effecting considerable savings in installation. Conductor are easily assembled at site with use of a jointing tool. All bars are supplied with connecting pins.

Design allows uni/multi pole mounting arrangement. Conductor can be mounted side by min. centre distance 30 mm.



GI Pin Type DSL Busbar



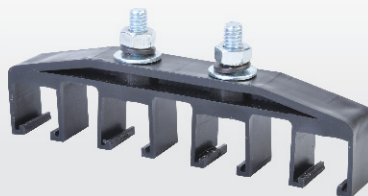
Copper Pin Type DSL Busbar

Single Pole Hanger Clamp



Moulded Plastic
Snap-On Type Support

Four Pole Hanger Clamp



Moulded Plastic
Snap-On Type Support

Splice Cover



Moulded Plastic One Piece
Clip-On Cover

Center power Feed Kit



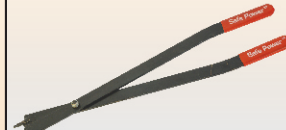
Kit Comprising Power
Feed Clamp

End Cup



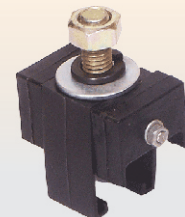
Kit Comprising Stop
Bolt and PVC Push-On
Insulating Cover

Jointing Tool



Special Assembly Tool
Required To Connect
Bars On Site

Anchor Clamp



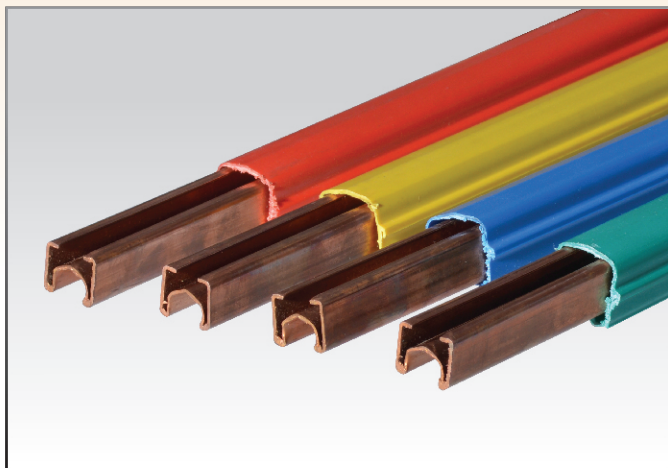
Moulded Plastic Snap-On
Type With Self Anchoring
Feature.For Use at
Anchor Points

“W” Bolt Type DSL Busbar System

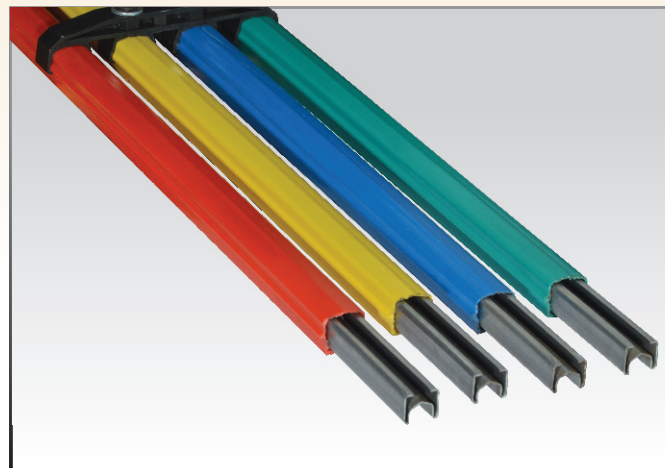
These Conductor are Compact, Insulated and easy to installation. V Compact design ensures Positive Contact. The Conductor are color coded RYBG.

They can be mounted in Horizontal or Vertical configuration.

The Conductor Bars are 4.5 Meters long to be supported at every one Meter. Design allows Uni/Multi pole mounting arrangement. Conductors can be Mounted Side by Side



Copper Bolt Type DSL Busbar



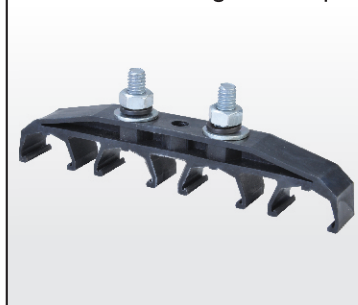
GI Bolt Type DSL Busbar

Single Pole Hanger Clamp



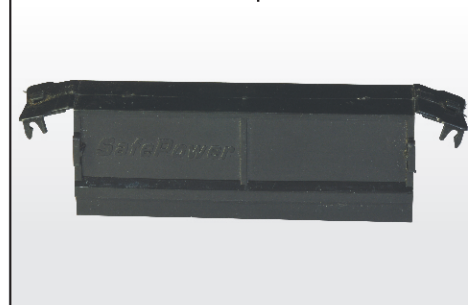
Snap on insulated Single Pole Hanger Clamps designed for Horizontal / Vertical installations.

Four Pole Hanger Clamp



Snap on insulated Four Pole Hanger Clamps designed for Horizontal / Vertical installations.

Bolt Clamp Cover



Easy to fit, Snap on type, insulated joint Cover protects the joint.

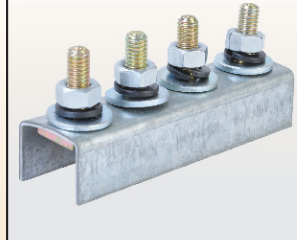
Brass Joint Clamp
(Copper Bus Bar)



Bolted Joints are designed to rigidly join Conductor Bars. Two bolts on either side ensure Electrically and Mechanically strong joint

Double Bolted design provides Smooth and Perfect Alignment at Joints. This allows smooth glide of Collectors

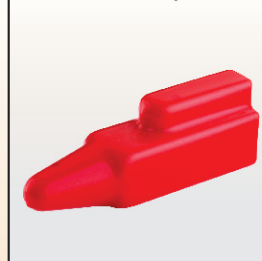
GI Joint Clamp
(GI Bus Bar)



Bolted Joints are designed to rigidly join Conductor Bars. Two bolts on either side ensure Electrically and Mechanically strong joint

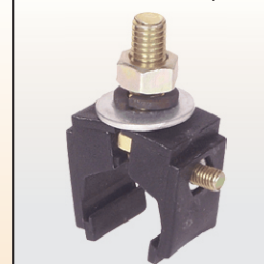
Double Bolted design provides Smooth and Perfect Alignment at Joints. This allows smooth glide of Collectors

End Cup



The Open Ends / End Feeds of conductors are covered by End Caps.

Anchor Clamp



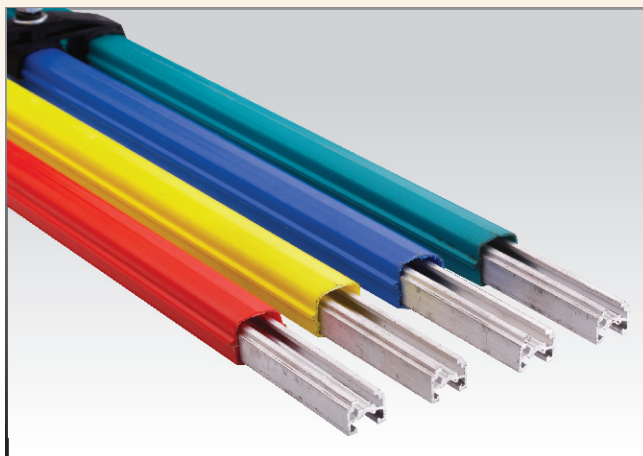
Plastic moulded Snap-on type with self anchoring feature. For use at Anchor Points.

Aluminum with S.S Strip Conductor Bar

These Conductor are Compact, Insulated and easy to installation. V Compact design ensures Positive Contact. The Conductor are color coded RYBG.

They can be mounted in Horizontal or Vertical configuration.

The Conductor Bars are 4.5 Meters long to be supported at every one Meter. Design allows Uni/Multi pole mounting arrangement. Conductors can be Mounted Side by Side



Single Pole Hanger Clamp



Snap on insulated Single Pole Hanger Clamps designed for Horizontal / Vertical installations.

Four Pole Hanger Clamp



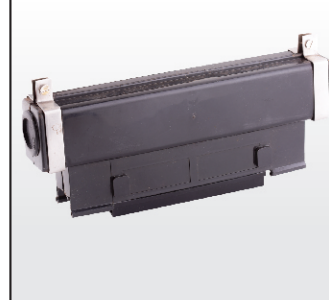
Snap on insulated Four Pole Hanger Clamps designed for Horizontal / Vertical installations.

Bolt Clamp Cover



Easy to fit, Snap on type, insulated joint Cover protects the joint.

Center Power Feed Kit



The Power Feed point can be at either end or any where along the run. One more Power Feed points are possible to reduce Voltage Drop.

Aluminum Joint Clamp



Bolted Joints are designed to rigidly join Conductor Bars. Two bolts on either side ensure Electrically and Mechanically strong joint

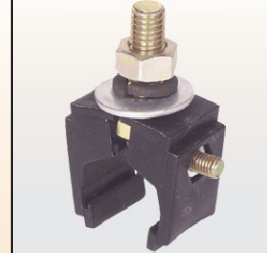
Double Bolted design provides Smooth and Perfect Alignment at Joints. This allows smooth glide of Collectors

End Cup



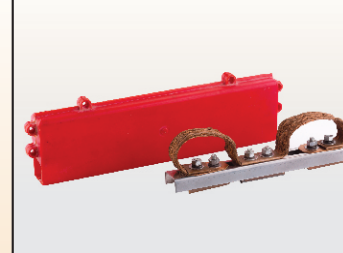
The Open Ends / End Feeds of conductors are covered by End Caps.

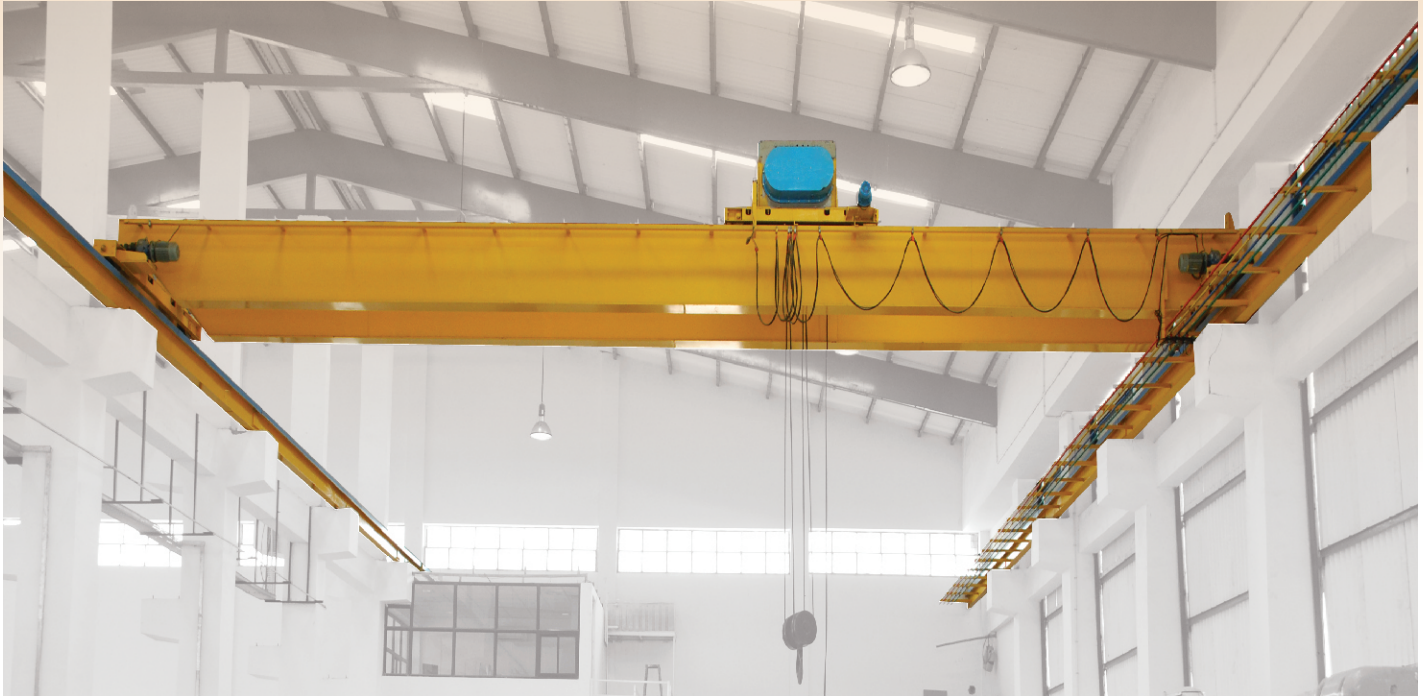
Anchor Clamp



Plastic moulded Snap-on type with self anchoring feature. For use at Anchor Points.

Expansion Joint





FEATURES

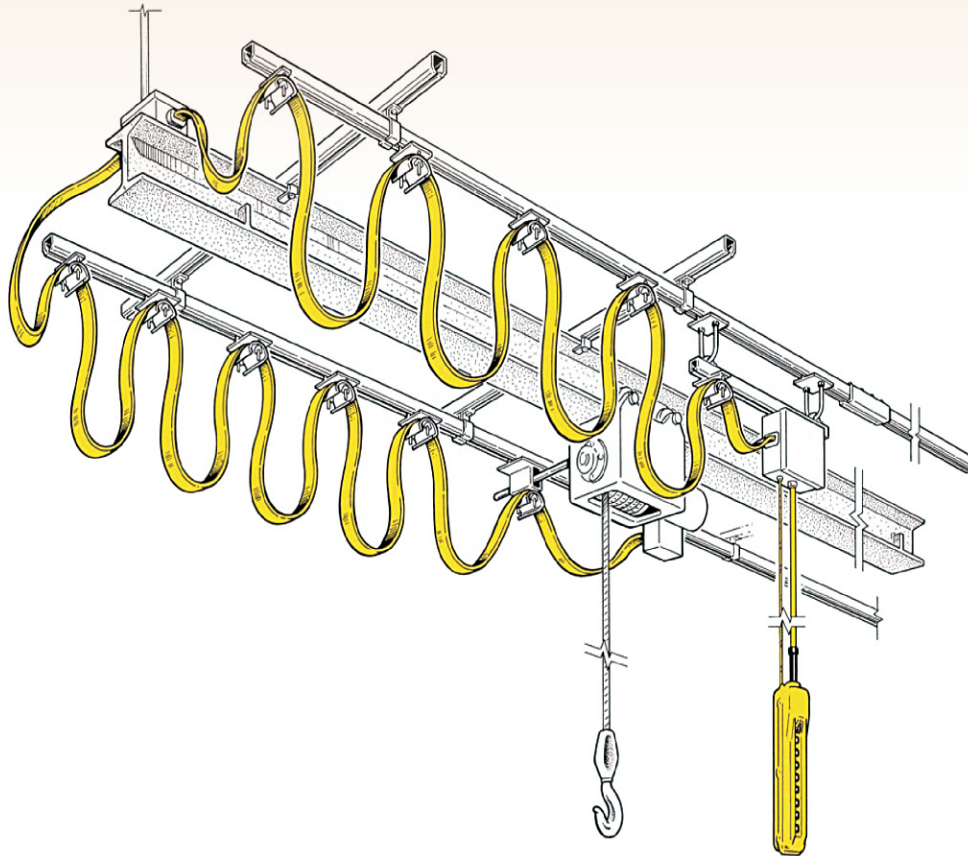
- Insulated Conductors are touch proof, no exposed.
- Quick & Easy Installation with single Pole & 4 Pole Hanger.
- 60 to 400 Amps Conductor in same standard.
- 60, 100 & 125 Amps in Galvanized Steel.
- 200 & 315 Amps in Aluminium S.S. Strip.
- 160,250, & 400 Amps in Rolled Copper.
- Cover Designed to shed water and dust.
- Joint Cover provides total protection of joints.
- Enclosed Wiring for connection on collectors for safe and simple installation.
- No Expansion Joints up to 150 Meters long System.

ADVANTAGES

- It is Insulated.
- It is finger safe.
- No chance of accident.
- Color coded R Y B G.
- No need for a protection guard.
- No spark as spring loaded current collector provides pressurized electrical contact.
- It is compact occupies less space.

Cable Festooning System

Ganesh Industries offers a comprehensive line of festoon products, ranging from simplest of systems running on stretched wire rope to the complex, high speed demands of portal and container cranes. Safe Power's festoon systems run on wire rope, c-track, square bar and I-Beams, with trolleys able to support static loads up to 100 Kg. with Heavy-Duty festoon systems. Safe Power festoon systems are designed to support and protect flat and round electrical cables. Our systems can operate in indoor and outdoor environments and can also be designed for harsh, aggressive environments. Outstanding Features: Durability, Versatility, Safety & Ease of Operation



Safe Power C-RAIL FESTOON SYSTEMS are a clean, economical and efficient method of managing power and control cables for mobile equipments.

FESTOON SYSTEMS are generally used on overhead cranes for the transmission of power and control signals for cross bridge trolley travel, but they can also be applied to crane runway travel, transfer cars, monorails, refuse cranes, waste water treatment machines, industrial Cranes & Hoists, Machine Tools, Maintenance Equipment, Production / Assembly / Process Lines, Stacker / Retriever Cranes, High Acceleration / Curves / Heavy Duty, Etc.

Applications



Crane



Hoist & Crab



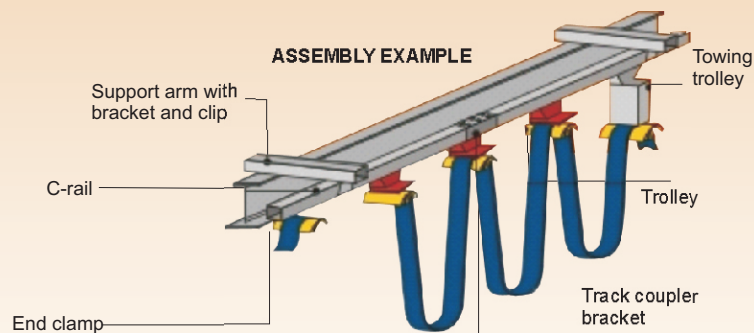
Monorail



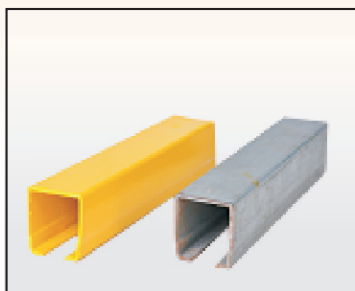
Refuse Crane



Effective Work Area



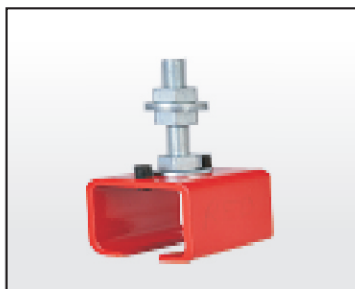
C-Rails & Accessories



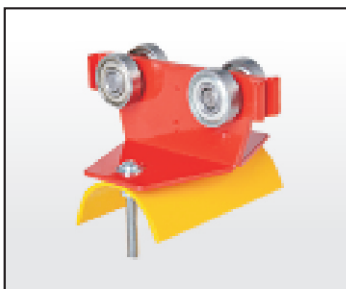
C-Rail Bars
Material: Galvanized Steel / Powder Coated
Length: 4 mtr.



End Stop
Material: MS Steel



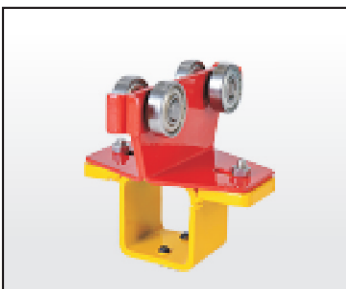
Track Support Bracket
(1 piece)
Material: MS Steel
Max support spacing: 1 mtr. (Recommended)



Flat Cable Trolley
Material: MS Steel
Type of roller: steel rollers or ball bearings.



Track Coupler Bracket
To join c-rails and suitable for supporting the track
Material: MS Steel



Towing Trolley
Material: MS Steel
Type of roller: steel rollers or ball bearings.

COMPONENTS

- Profile : C Rail runway of the trolley 4 meter standard.
- Hanger Clamp : Ensure the fastening of the 'C' rail to the structure. To be placed every 1 meters in the ambush area every 1 meter.
- Towing arm : To be placed in the hoist or crane to make the haul together with the towing trolley.
- Track Coupler : To fit consecutive track sections.
- End stop : Avoid the fallen down of the trolleys at the end of the line.
- Towing trolley : It moves together with the device to be fed.
- Cable trolley : It moves in the profile along the track bearing the cables

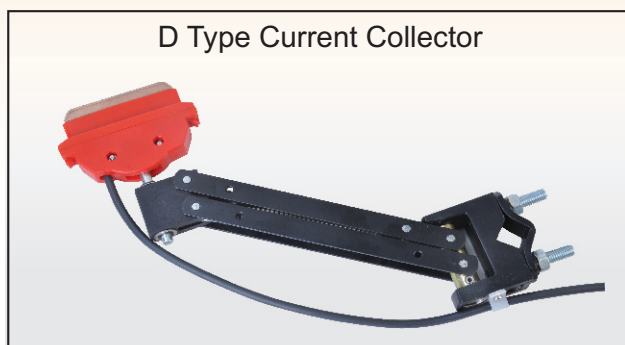
Current Collectors

Heavy Duty Current Collectors are of fully Articulated Design.

This provides multi axis degree of movement thereby allowing compensation of machine motion tolerances and installation variation.

Spring Loaded unit provides positive pressure contact with conductor, thus ensures uninterrupted power transfer during motion.

Variety of designs for different applications and site conditions.



60 Amp. to 125 Amp



160 Amp. to 400 Amp

1	Current Collector Type	“D” Type	“M” Type
2	Currant Rating.	125 Amp	250 amp
3	Collector Movement Horizontal Vertical	+ 200 + 60	+ 200 + 60
4	Mounting Bracket	19 sqmm bar	25 sqmm bar
5	Mounting Distance From Conductor Contact Surface	127 MM	127 MM
6	Construction	1 Pole	1 Pole
7	Sintered Copper Shoe	125 Amp.	250 Amp.
8	Shoe Holder	Nylon	Nylon
9	Structure	Metallic	Metallic
10	Two Collector in Tandem to be used for Higher Currents & in Expansion Assemblies		

MAINTENANCE COST : No periodic maintenance is required. only consumable item is contact shoe.

APPLICATION AND USAGE

Shrouded DSL installations for ETO Cranes, Electric Hoists, Straight / Curved Monorails, Conveyors, Amusement Drives, Electric Trolleys, Transfer Cars, Automated storage systems, Material handling systems etc.

Heavy Fabrication Industries

Crane Manufacturers

Automobile Industries

Docks and Ports

Cement Plant Industries

Turnkey Projects

Power Plants

Material Handling Equipment

Government Sectors

Sugar Plant Industries



Our Reputed Customers

				
ARCELOR MITTAL	ABG SHIPYARD LIMITED	ANOFOL FAR EAST ANODIZING PVT LTD	BRADYS & MORRIS	BIRLA CARBON
				
BHARITIYA NABHIKIYA VIDYUT NIGAM LTD	BANNARI AMMAN SUGARS LTD	CHEMFAB ALKALIS LIMITED	EVEREADY INDUSTRIES INDIA LTD.	EAST COAST CONSTRUCTIONS AND INDUSTRIES LIMITED
				
JAYPEE CEMENT	ESSAR STEEL LIMITED	GPT STEEL INDUSTRIES LTD.	GANGAKHED SUGAR AND ENERGY LIMITED	GRASIM INDUSTRIES LTD
				
HINDUSTAN AERONAUTICS LIMITED	JINDAL INDIA LTD.	JSW Steel Ltd.	JYOTI CNC	KSB PUMPS LIMITED
				
KALYANI STEELS LIMITED	LARSEN & TOUBRO	TATA STEEL PROC. & DISTRIBUTION LTD.	MANISH FORGING LTD	McNally Sayaji Engineering Limited
				
MURUGAPPA GROUP	NTPC	NCL GROUP	TRL KROSAKI REFRACTORIES LTD.	E.I.D. PARRY INDIA LIMITED
				
PIPAVA DEFENCE & OFFSHORE ENGINEERING PVT LTD	SAINSONS PAPER INDUSTRIES LTD.	TATA MOTORS	USHA MARTIN LTD.	UTKAL AUTOMOBILES LIMITED



AN ISO 9001 : 2008 COMPANY

SafePower®
Shrouded DSL BUS BAR & Festoon System



Contct us

Mr. Ghanshyam D Parmar - M No. +91 9825216374
(Technical Dirctor)

Mr. Bharat D Parmar - M No. +91 9879564445 / 9033475646
(Marketing Head)

E-mail : marketing@dslbusbar.com

Mr. Nirav Vyas - M No. +91 97247 39151
(Marketing Manager)



Aji, GIDC, B/h. Melt Tech, Road Q1, Shed No. K1-243/7, Rajkot 360 003 (GUJARAT) India

Phone : +91 281 2389285 / 2389385 Fax : +91 281 2385381

email : info@dslbusbar.com / dslbusbar@gmail.com web. : www.dslbusbar.com / www.festoonsystem.co.in